



| TRAINING: QP, QTS

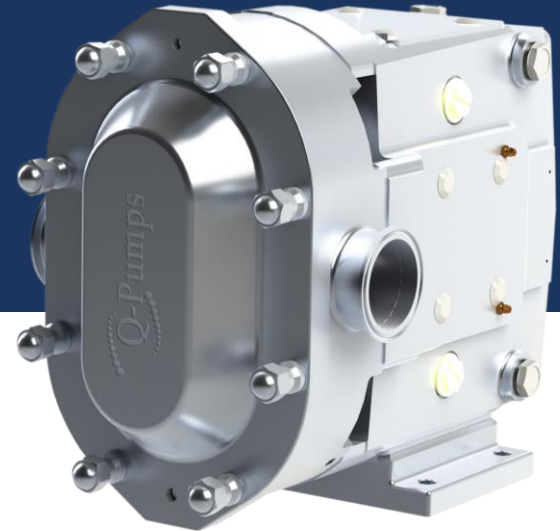


A close-up photograph of a Q-Pumps positive displacement pump. The pump is a cylindrical, metallic device with a yellow handle on top. It has several ports and fittings. The Q-Pumps logo is visible on the side. The background is slightly blurred, showing other equipment in a laboratory or industrial setting.

POSITIVE DISPLACEMENT PUMPS

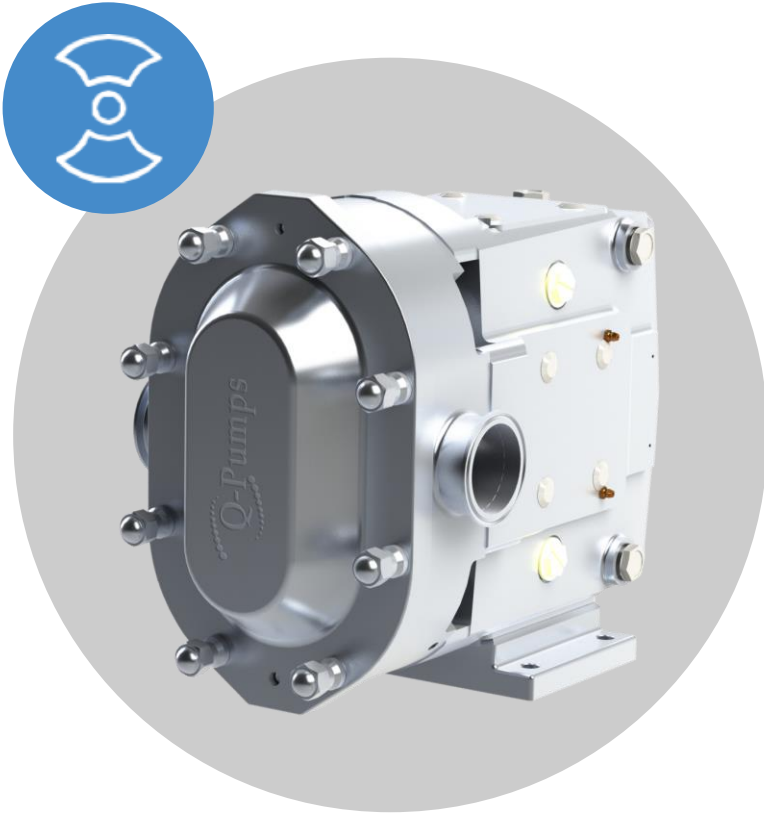
QP SERIES

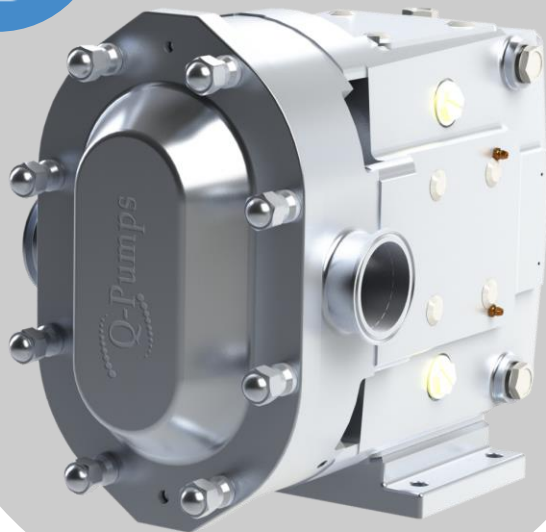
CIRCUMFERENTIAL PISTON PUMPS



INTRODUCTION

- QP Series (circumferential piston pump) is a positive displacement pump which is useful to handle high and low viscosities products at high pressures.





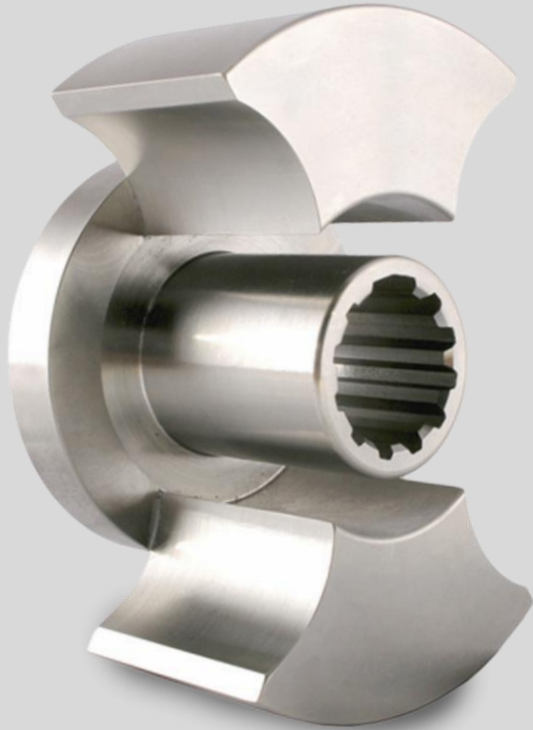
CHARACTERISTICS

- Maximum flow: 312 GPM.
- Pressures up to 31 bar (450 psi).
- Viscosities up to 1,000,000 cP.
- Temperatures up to 302°F.



CHARACTERISTICS

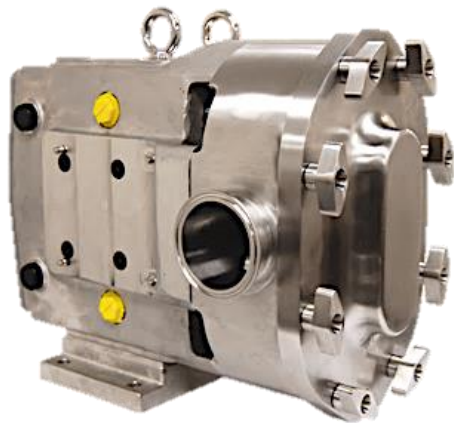
- Stainless Steel materials with 3A certification.
- 32 Ra surface finish (option at 16 Ra)
- Alloy 88 rotors as Standard.
- 17-4 PH shafts.
- Helical gears.



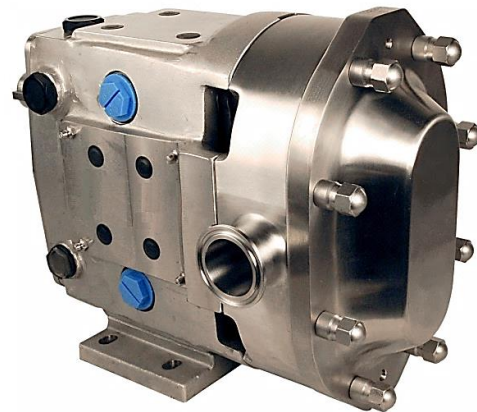
CHARACTERISTICS

- QP series is homologous to Waukesha U1/U2, Wright TRA 10/TRA20, AMPCO ZP1/ZP2
- QP series offer an excellent quality and it is 100% interchangeable (hydraulic & dimensionally) with the other brands.
- All the pumps have stainless steel gearbox as standard

MODELS

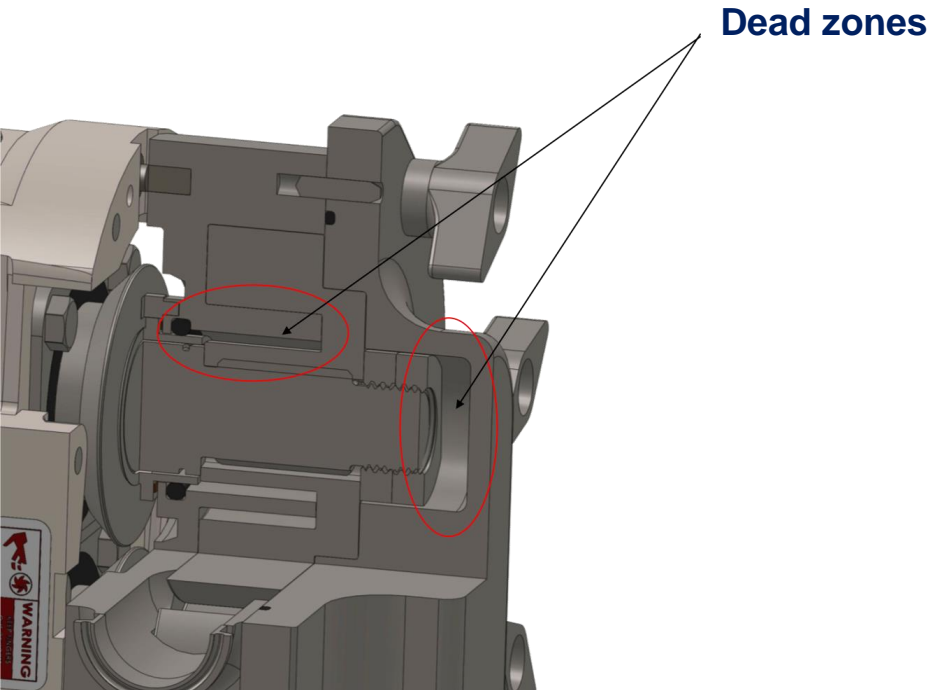


QP1



QP2

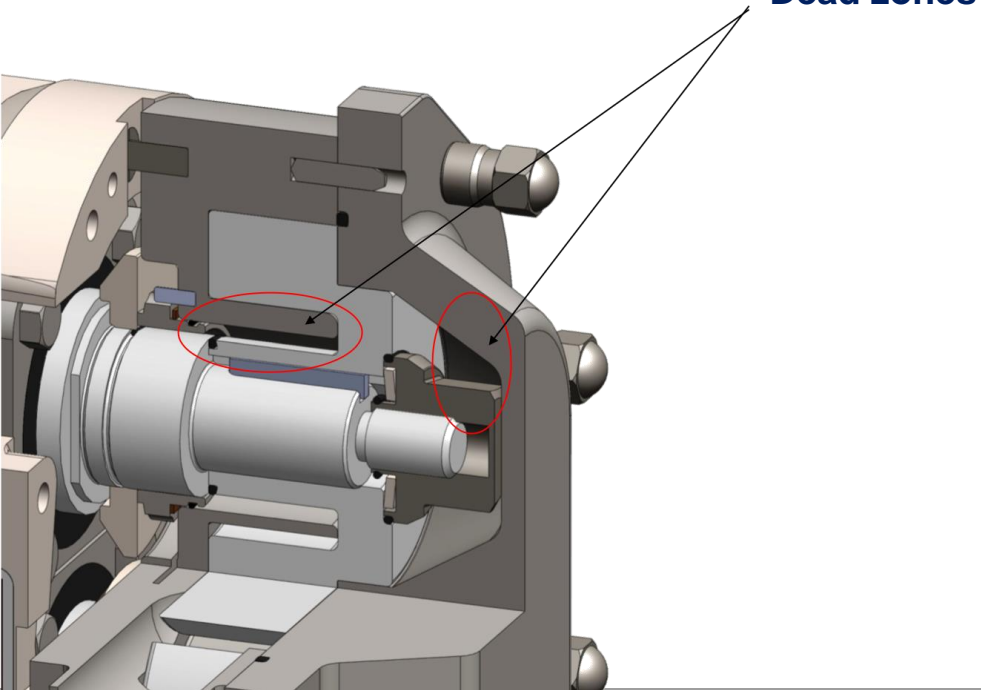
QP1



CHARACTERISTICS:

- Designed for COP
- Easy disassembly
- Has different options of seals (o-ring, single and double mechanical seal)
- 3A certification

QP2



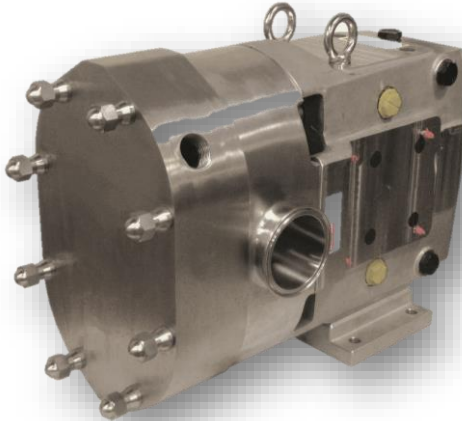
CHARACTERISTICS:

- Designed for CIP
- Mechanical seal as standard
- Endures high pressures
- Wide shafts
- Single and double mechanical seals
- 3A certification

OPTIONAL ARRANGEMENTS



Relief valve configuration



Heating jacket configuration



Rectangular inlet

APPLICATIONS



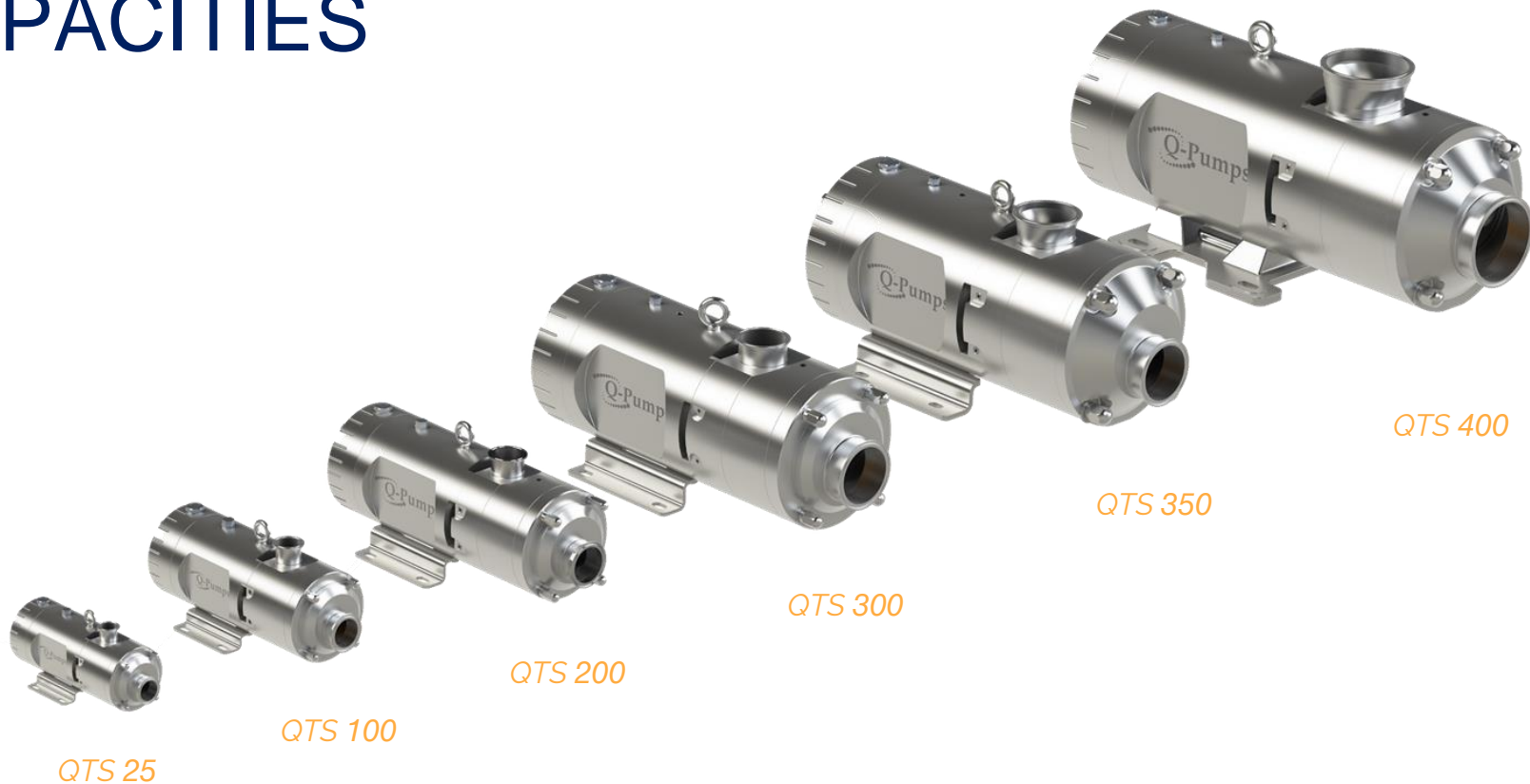
QTS SERIES



TWIN SCREW TECHNOLOGY

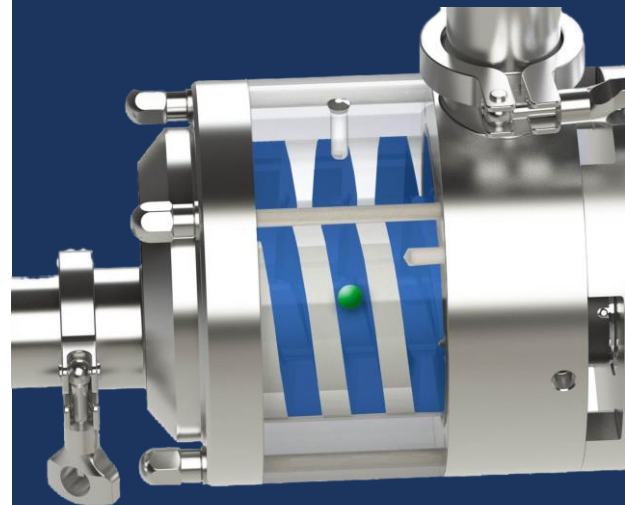


CAPACITIES



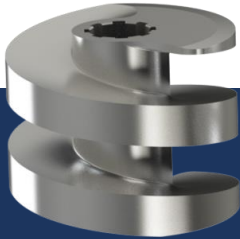
CHARACTERISTICS

- Flow rates up to 1000 GPM (3,785 LPM)
- Pressure up to 360 psi (25 bar)
- Viscosities from 1 cP to 1,000,000 cP
- Temperatures up to 120 °C, specific applications up to 150 °C
- Ideal for process and CIP



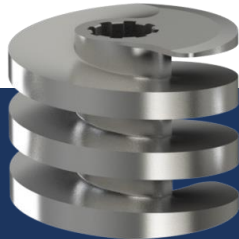
ROTORS

*2 Turns
rotor*



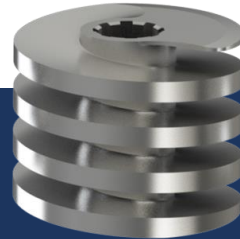
*High Flow
Low pressure
Big solid particles
Large pitch*

*3 Turns
rotor*



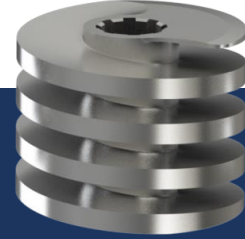
*Medium Flow
Medium pressure
Small solid particles
Medium pitch*

*4 Turns
rotor*



*Low Flow
High pressure
No solids
Short Pitch*

*4 Turns
HE rotor*



*Low Flow
Medium
pressure
No solids*

CHARACTERISTICS

The QTS can pump:
Shear sensitive products



CHARACTERISTICS

The QTS can pump:
Abrasive products



CHARACTERISTICS

The QTS can pump:
Products with up to 60% air
content (semi-solids)



CHARACTERISTICS

The QTS can pump:
Suspended particles without
damage them or the pump itself.



Maximum size of suspended solids without mistreating them

<i>Size Particle</i>		
QTS 103	9.65 mm	0.379
QTS 102	14.22 mm	0.559in
QTS 203	14.22 mm	0.559in
QTS 202	18.03 mm	0.710in
QTS 303	17.27 mm	0.679in
QTS 302	25.40 mm	1.00in
QTS 353	21.60 mm	0.850in
QTS 352	33.00 mm	1.30in
QTS 403	24.89 mm	0.980in
QTS 402	38.10 mm	1.50in

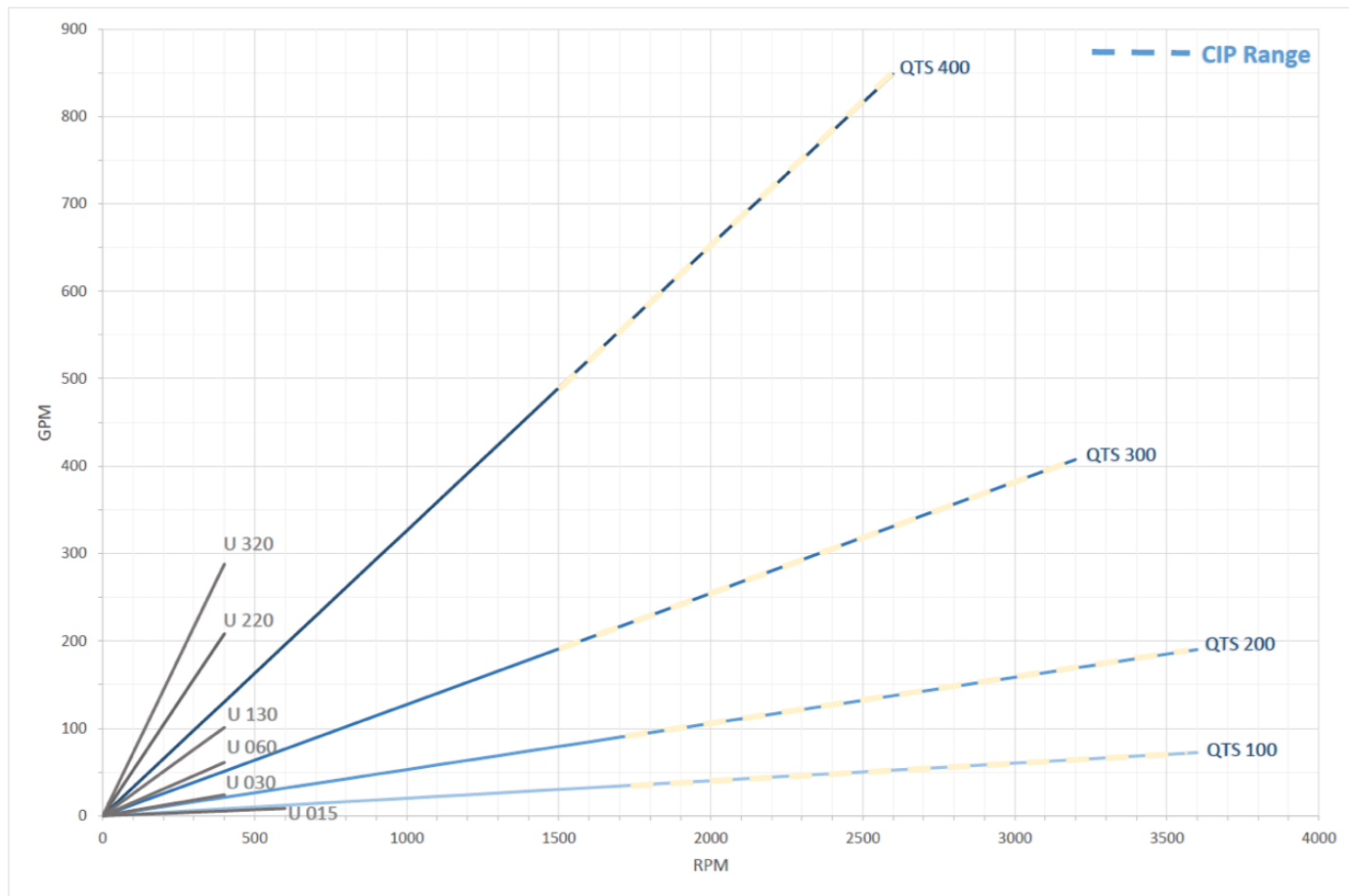


CHARACTERISTICS

*The QTS can do **CIP** by itself and it's **100% CIP able***

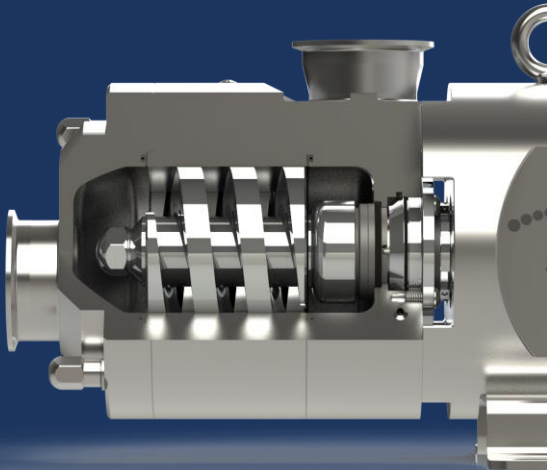


High speed pump



COMPETITIVE ADVANTAGES

- Ideal for process and CIP using the same pump
- 100% CIP able at high speeds.
- Self-priming.
- Great suction capacity.
- Reduces the NPSHa issues.



AVAILABLE SEALS



MECHANICAL SEAL



O-RING SEAL



LIP SEAL

LIP SEAL APPLICATIONS

Ideal for chocolate, syrup, honey, epoxic paints and resins.



RECTANGULAR INLET



RECTANGULAR SUCTION

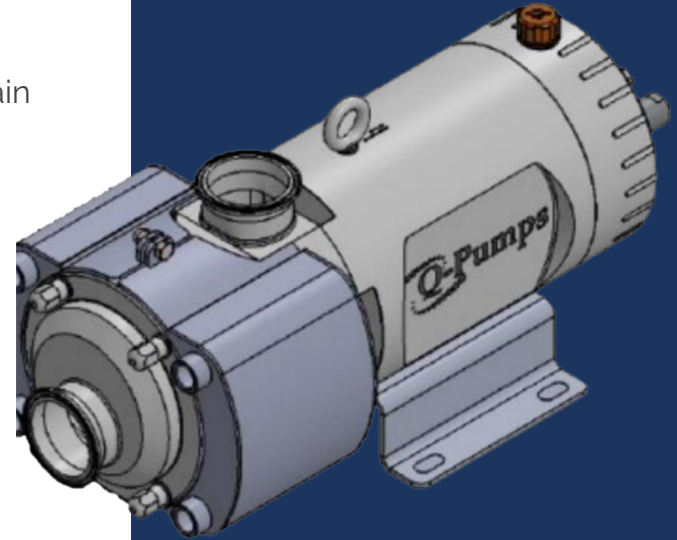
- Ideal for semi-solid products such as pastes, dough, meat, etc.
- High viscosity handling (**100,000** to **1,000,000** Cp)
- Ideal for products with high air content
- Perfect for vacuum applications with low and medium viscosities.
- Ideal for low NPSHa applications
- **10%** more efficient with water than standard rotors (due to extended rotor.)
- Pressures up to 12 bar



OPTIONAL ARRANGEMENTS

Heating jacket

- Manufactured in stainless Steel 304 with a sandblasted finish
- It consists of hermetic chambers that are interconnected to contain fluids used to refrigerate or heat the pump body.



APPLICATIONS



DIRECTORY



Application Engineers

Octavio Juárez

+52 (442) 1033 100

octavio@qpumps.com

Ext. 210

Israel Hernández

+52 (442) 1033 100

israel@qpumps.com

Ext. 206

Adrián Jacinto

+52 (442) 1033 100

adrian@qpumps.com

Ext. 218

Joaquín Cortés

+52 (442) 1033 100

joaquin@qpumps.com

Ext. 217

Product Engineers

Juan Pablo Gutiérrez

juanpablo@qpumps.com

+52 (442) 1033 100

Ext. 207

Alberto López

(442) 1033 100

alberto@qpumps.com

+52

Ext. 113

Reynaldo Sánchez

(442) 1033 100

reynaldo@qpumps.com

+52

Ext. 213

Product Engineering Manager

Geraldo Vega

geraldo@qpumps.com

+52 (442) 1033 100

Ext. 219

SOME OF OUR CLIENTS

